



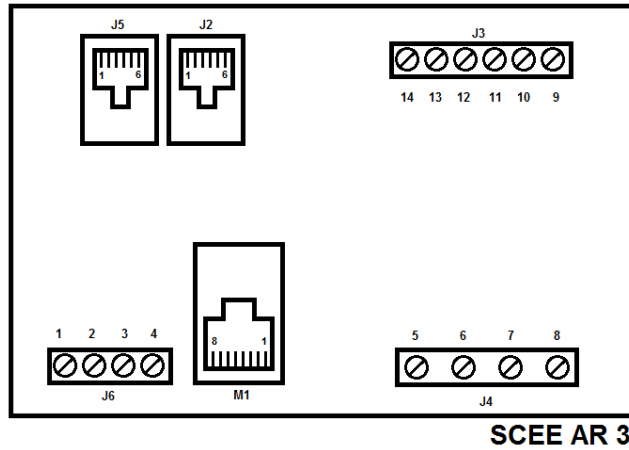








## Device connections



### J2 y J5 Power Supply & RS485, RJ11 dual connector, Link 485

1,6	Power Supply +	+12 Vdc
2,5	Power Supply -	0 Vdc
3	RS485 signal +	A+
4	RS485 signal -	B-

### J3 Cts, Current transformer measures, screw connector

10	Current Line 1	K1
12	Current Line 2	K2
14	Current Line 3	K3
9, 11, 13	Return of CTs	L1, L2, L3

### J4 Voltage measures, screw connector

5	Neutral	N
6	Line 1	L1
7	Line 2	L2
8	Line 3	L3

### J6 Power Supply & RS485, screw connector

1	RS485 signal +	A+
2	RS485 signal -	B-
3	Power Supply -	0 Vdc
4	Power Supply +	+12 Vdc

### M1 Ethernet connection, RJ45 connector

Connection to UTP cable	RJ45 conector
-------------------------	---------------

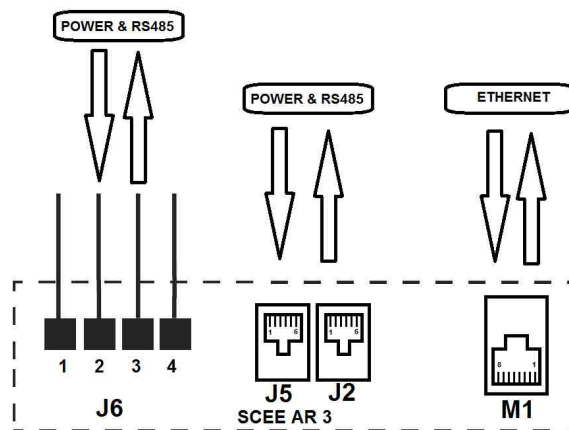
## Installation

---

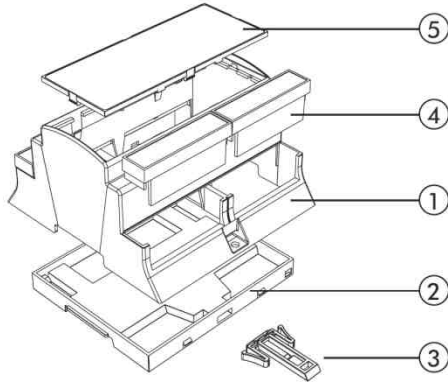
To electric network.



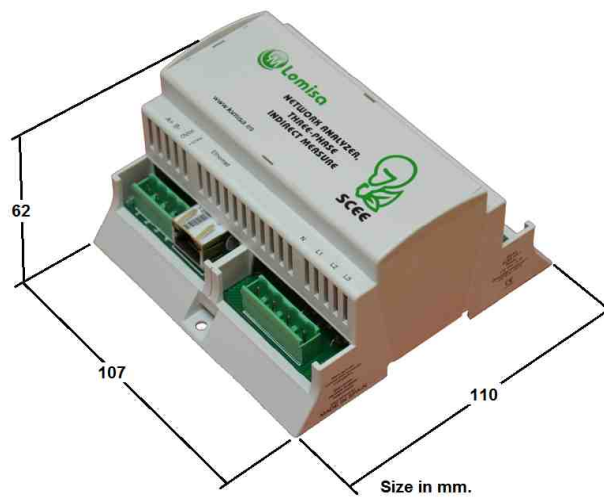
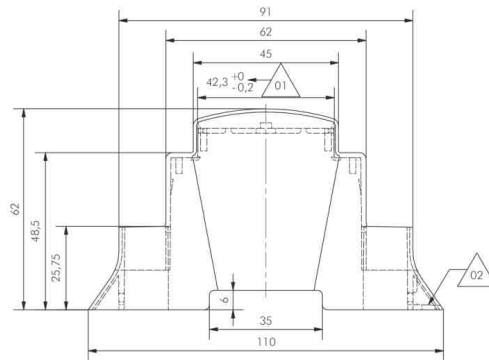
To communication nodes.



## Dimensions



- 1) Body enclosure
- 2) Base
- 3) Hook
- 4) Terminal Cover (optional)
- 5) Panel

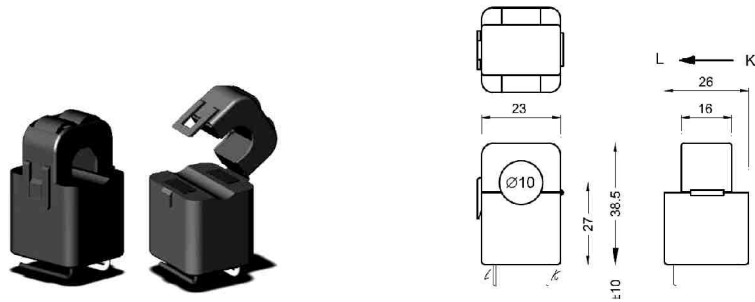




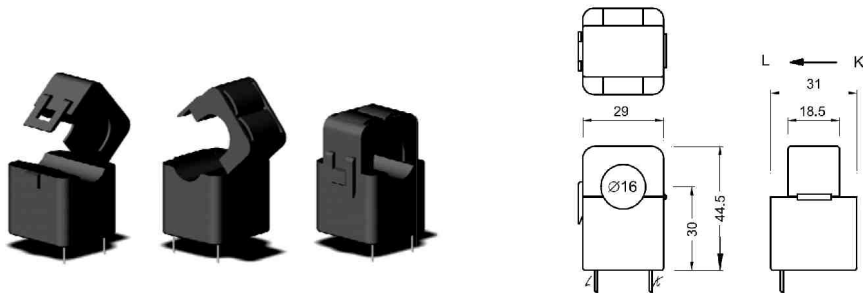
## Accesorios

### Current transformers, SCEE CT

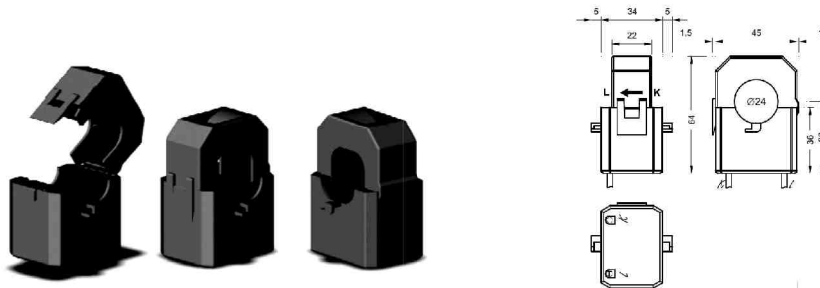
Model: **SCEE CT 10-090**, for cables up to **10 mm** diameter and currents up to **90 Arms** .



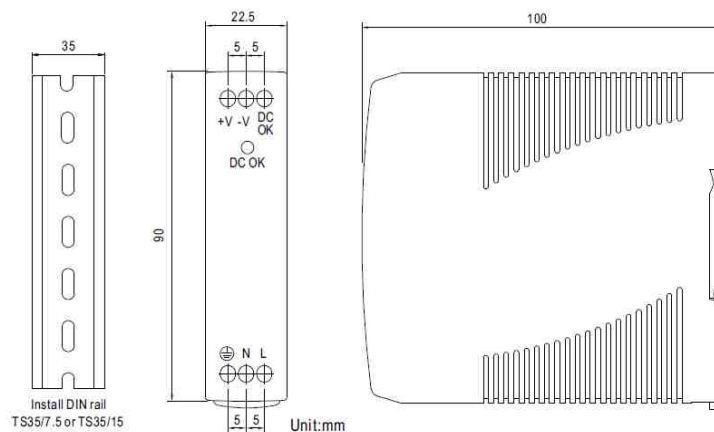
Model: **SCEE CT 16-150**, for cables up to **16 mm** diameter and currents up to **150 Arms** .



Model: **SCEE CT 24-250**, for cables up to **24 mm** diameter and currents up to **250 Arms** ..



**Power supply, SCEE PS 2**



- > Output voltage: 12 Vdc.
- > Maximum output current: 850 mA.
- > Input voltage: 100 to 240 VAC.
- > Electric Network Frequency: 50 or 60Hz
- > DIN rail mounting.
- > IP50 protection.