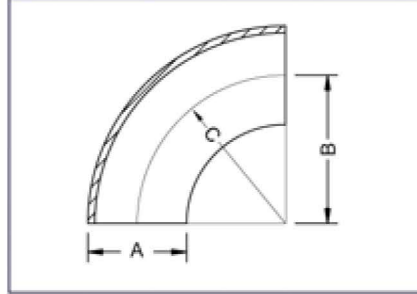




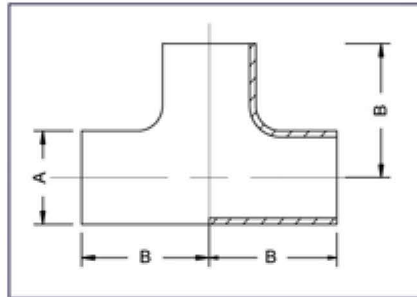
## ACCESORIOS DIN



### DIN 90° CODO A SOLDAR

Sin Largo

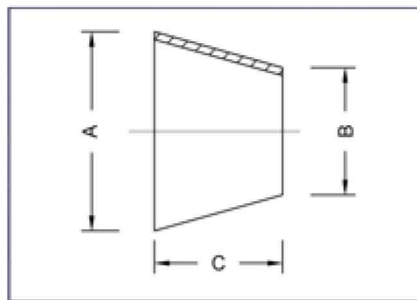
Tamaño	Ref.	A	B	C
10	101010	12	26	26
15	101015	18	35	35
20	101020	22	40	40
25	101025	28	50	50
32	101032	34	55	55
40	101040	40	60	60
50	101050	52	70	70
65	101065	70	80	80
80	101080	85	90	90
100	1010100	104	100	100



### DIN TEE A SOLDAR

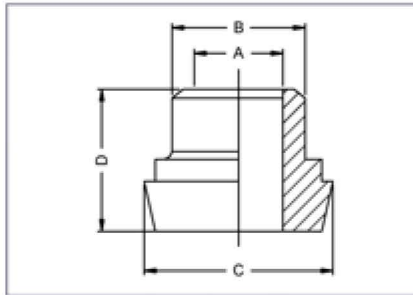
Con Largo

Tamaño	Ref.	A	B	C
10	105010	12	26	52
15	105015	18	35	70
20	105020	22	40	80
25	105025	28	50	100
32	105032	34	55	110
40	105040	40	60	120
50	105050	52	70	140
65	105065	70	80	160
80	105080	85	90	180
100	1050100	104	100	200



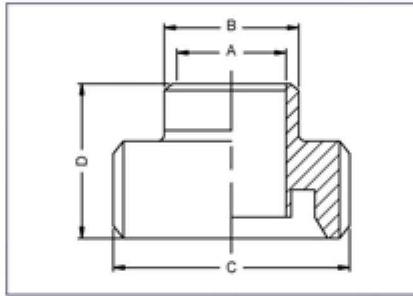
### DIN REDUCCION CONCENTRICA

Tamaño	Ref.	A	B	C
15/10	110001	18	12	18
20/15	110003	22	18	24
25/15	110005	28	18	27
25/20	110006	28	22	28
32/20	110008	34	22	29
32/25	110009	34	28	30
40/20	110012	40	22	34
40/25	110013	40	28	34
40/32	110014	40	34	34
50/25	110017	52	28	44
50/32	110018	52	34	45
50/40	110019	52	40	45
65/32	110021	70	34	51
65/40	110022	70	40	56
65/50	110023	70	52	45
80/40	110026	85	40	80
80/50	110027	85	52	69
80/65	110028	85	70	48
100/50	110032	104	52	90
100/65	110033	104	70	78
100/80	110034	104	85	55



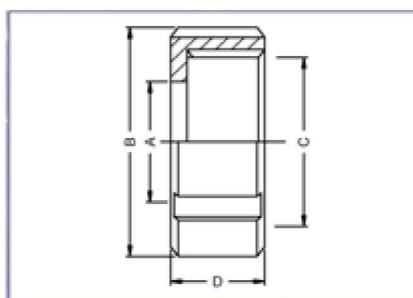
### DIN LINER A SOLDAR

Tamaño	Ref.	A	B	C	D
10	201010	10	15	22	17
15	201015	16	21	28	17
20	201020	20	25	36	18
25	201025	26	31	44	22
32	201032	32	37	50	25
40	201040	38	43	56	26
50	201050	50	55	68	28
65	201065	66	72	86	32
80	201080	81	87	100	37
100	201100	100	106	121	44
125	201125	125	132	150	34
150	201150	150	157	176	37



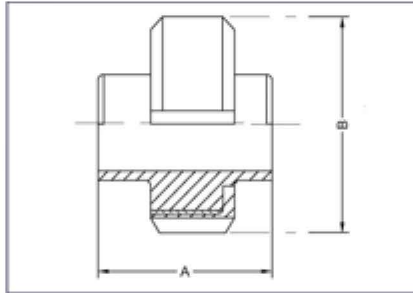
### DIN TUERCA A SOLDAR

Tamaño	Ref.	A	B	C	D
10	202010	10	15	28X1/8"	21
15	202015	16	21	34X1/8"	21
20	202020	20	25	44X1/6"	24
25	202025	26	31	52X1/6"	29
32	202032	32	37	58X1/6"	32
40	202040	38	43	65X1/6"	33
50	202050	50	55	78X1/6"	35
65	202065	66	72	95X1/6"	40
80	202080	81	87	110X1/4"	45
100	202100	100	106	130X1/4"	54
125	202125	125	132	160X1/4"	46
150	202150	150	157	190X1/4"	50



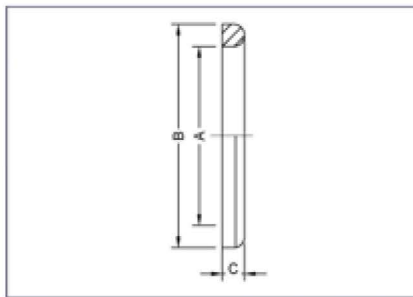
### DIN TUERCA RANURADA

Tamaño	Ref.	A	B	C	D
10	203010	19	38	28X1/8"	18
15	203015	25	44	34X1/8"	18
20	203020	31	54	44X1/6"	20
25	203025	36	63	52X1/6"	21
32	203032	42	70	58X1/6"	21
40	203040	49	78	65X1/6"	21
50	203050	62	92	78X1/6"	22
65	203065	80	112	95X1/6"	25
80	203080	94	127	110X1/4"	29
100	203100	115	148	130X1/4"	31
125	203125	138	178	160X1/4"	35
150	203150	164	210	190X1/4"	41



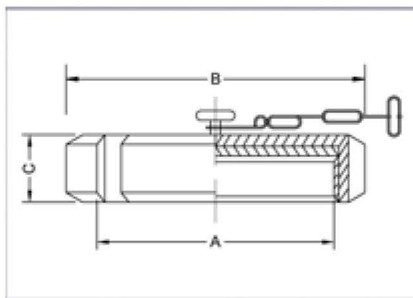
### DIN UNION COMPLETA

Tamaño	Ref.	A	B
10	210010	34	38
15	210015	34	44
20	210020	36	54
25	210025	45	63
32	210032	51	70
40	210040	53	78
50	210050	57	92
65	210065	65	112
80	210080	75	127
100	210100	89	148
125	210125	70	178
150	210150	76	210



### DIN EMPACADURA PARA UNION

Tamaño	Ref.	A	B	C
10	220010	12	20	4
15	220015	18	26	4
20	220020	23	33	4
25	220025	30	40	5
32	220032	36	46	5
40	220040	42	52	5
50	220050	54	64	5
65	220065	71	81	5
80	220080	85	95	5
100	220100	104	114	5
125	220125	130	142	6
150	220150	155	167	6



### DIN TAPA CIEGA CON CADENA

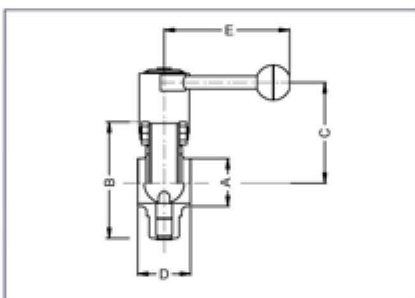
Tamaño	Ref.	A	B	C
10	230010	28 x 1/8"	38	18
15	230015	34 x 1/8"	44	18
20	230020	44 x 1/6"	54	20
25	230025	52 x 1/6"	63	21
32	230032	58 x 1/6"	70	21
40	230040	65 x 1/6"	78	21
50	230050	78 x 1/6"	92	22
65	230065	95 x 1/6"	112	25
80	230080	110 x 1/4"	127	29
100	230100	130 x 1/4"	148	31
125	230125	160 x 1/4"	178	35



ISO 14001  
BUREAU VERITAS  
Certification  
N° ES066341-1

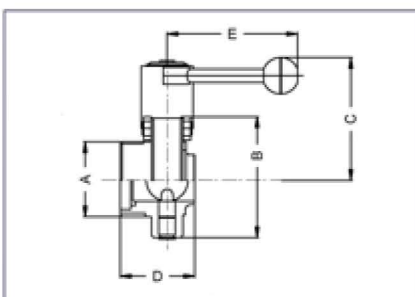


ISO 9001  
BUREAU VERITAS  
Certification  
N° ES066340-1



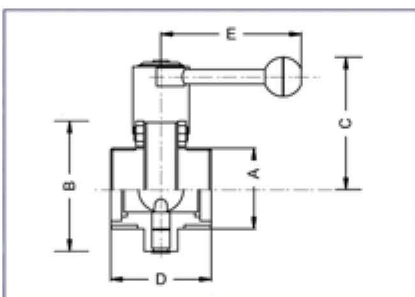
### DIN VALVULA MARIPOSA A SOLDAR

Tamaño	Ref.	A	B	C	D	E
25	301025	26	87	90	40	102
32	301032	32	92	93	42	102
40	301040	38	97	95	50	132
50	301050	50	110	100	50	132
65	301065	66	127	110	50	132
80	301080	81	142	117	60	165
100	301100	100	162	128	64	165



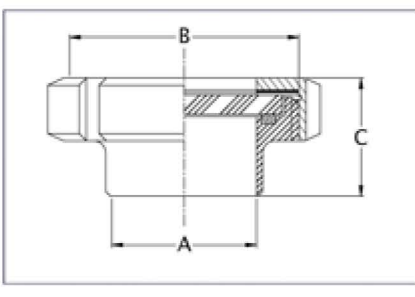
### DIN VALVULA MARIPOSA SOLDAR/ROSCA

Tamaño	Ref.	A	B	C	D	E
25	302025	52x1/6"	87	90	52	102
32	302032	58x1/6"	92	93	53	102
40	302040	65x1/6"	97	95	61	132
50	302050	78x1/6"	110	100	61	132
65	302065	95x1/6"	127	110	63	132
80	302080	110x1/4"	142	117	80	165
100	302100	130x1/4"	162	128	84	165



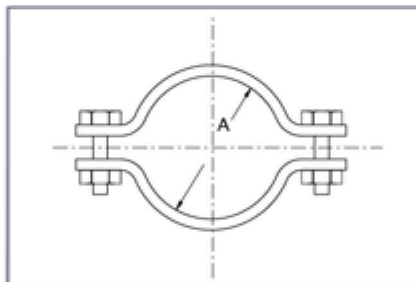
### DIN VALVULA MARIPOSA ROSCA/ROSCA

Tamaño	Ref.	A	B	C	D	E
25	303025	52x1/6"	87	90	64	102
32	303032	58x1/6"	92	93	64	102
40	303040	65x1/6"	97	95	72	132
50	303050	78x1/6"	110	100	72	132
65	303065	95x1/6"	127	110	76	132
80	303080	110x1/4"	142	117	100	165
100	303100	130x1/4"	162	128	104	165



### DIN VISOR PLANO A SOLDAR

Tamaño	Ref.	A	B	C
25	TMPD25	26	52x1/6"	33
32	TMPD32	32	58x1/6"	36
40	TMPD40	38	65x1/6"	41
50	TMPD50	50	78x1/6"	43
65	TMPD65	66	95x1/6"	48
80	TMPD80	81	110x1/4"	55
100	TMPD100	100	130x1/4"	66
125	TMPD125	125	160x1/4"	57



#### DIN SOPORTE PARA TUBERIA

Tamaño	Ref.	A	B
20	100020	22	20 X 3
25	100025	28	20 X 3
32	100032	34	20 X 3
40	100040	40	20 X 3
50	100050	52	20 X 3
65	100065	70	25 X 3
80	100080	85	25 X 3
100	100100	104	25 X 3
125	100125	129	25 X 3

Agregue 4 al final de la referencia para Acero Inoxidable 304L

Agregue 6 al final de la referencia para Acero Inoxidable 316L

### Tabla de Referencia con otras Marcas

DIN	LOMISA	NOCADO	CANDIGRA	VNE
90* Codo a soldar sin largo	1010	422-422K	2100	
Tee a soldar con largo	1050	5222-5222K	3000	
Reducción Concéntrica	1100	322	1300	
Cross Cruz	1060	576	30000	
Liner a soldar	2010	214	1012	
Rosca a soldar	2020	213	1011	
Tuerca Ranurada	2030	210	1003	
Unión Completa	2100	212A	1015	
Empacadura para unión	2200	211	1007	
Tapa ciega con cadena	2300	221K	1025	
Válvula Mariposa a Soldar	3010	622	4800	
Válvula Mariposa a soldar/rosca	3020	652	4810	
Válvula Mariposa a rosca/rosca	3030	655	4811	
Visor plano a soldar	TMPD		8050	
Soporte para tubería	1000	934	8300	